



Rogers Fire Department



2022 ANNUAL REPORT

TABLE OF CONTENTS



Chief's Message
Page 3

Station & Responses
Page 10

Mission, Vision, and Values
Page 4

Incident Types & Mutual Aid
Page 11

Command Staff
Page 5

Fire Incident & Response
Page 12-13

Department Organizational Chart
Page 6

EMS Incident & Response
Page 14-15

Apparatus Fleet
Page 7

Training Division
Page 16-17

Monthly Call Volume
Page 8

Risk Reduction Division
Page 18-19

Incident Location
Page 9

Fire Stations
Page 20

CHIEF'S MESSAGE



Tom Jenkins - Fire Chief
2009 - Present



As is tradition, I am proud to share our Yearly Activity Report with you. This report shares the success story of the Rogers Fire Department in 2022. Our department continues to offer first-class emergency response, preparedness, and mitigation efforts across a wide spectrum of our community. Our 160+ employees are committed to making Rogers a safe place to live, work, and visit.

The year saw significant investment in our human resources, personal protective equipment, and work flow to make our organization operate in the most effective and efficient manner possible. I hope you enjoy this report and appreciate the hard work of the women and men of the Rogers Fire Department. Their commitment, along with the unwavering support of Mayor Greg Hines and the Rogers City Council continues to make Rogers a city where possible lives!



VISION

It is the vision of the Rogers Fire Department to be an established authority, nationally recognized in every risk-related discipline.

MISSION

It is the mission of the Rogers Fire Department to provide exceptional risk-related services to our customers.

VALUES

Our members are our most valuable resource.

Relationships with internal and external agencies are integral to our success.

Reducing risk to all of our customers and members is paramount.

We embrace character, integrity, and ethical behavior.

COMMAND STAFF



Tom Jenkins
Fire Chief



William Hyde
Deputy Fire Chief
Risk Reduction



Dusty Meredith
Deputy Fire Chief
Field Operations



Jeremy Hoyer
Deputy Fire Chief
Training



Clint Bowen
Battalion Chief
A Platoon



Dusty Qualls
Battalion Chief
B Platoon



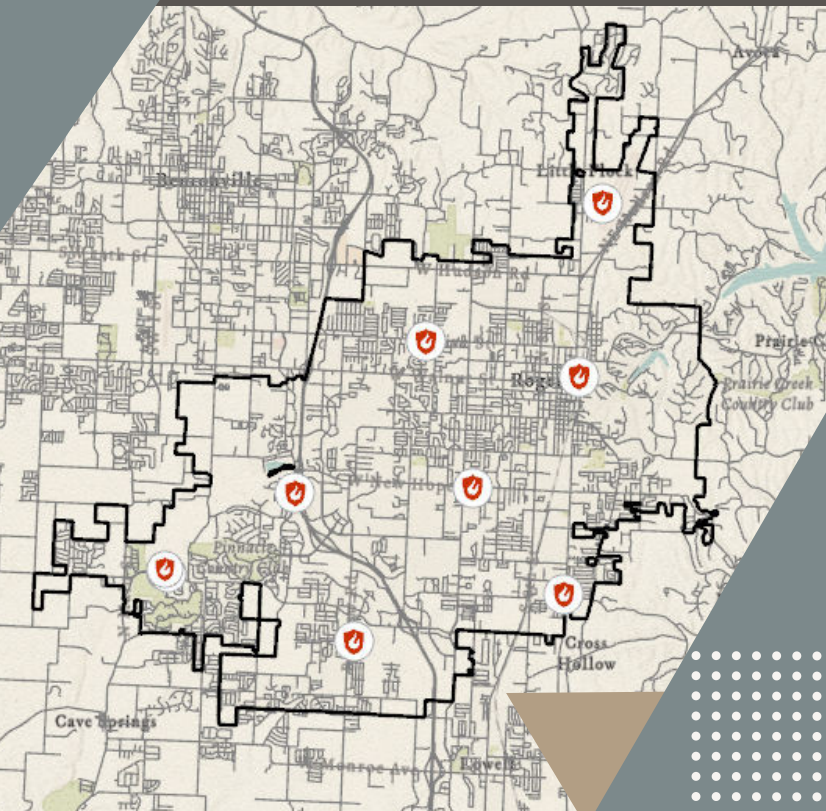
Brandon Howard
Battalion Chief
C Platoon



Kevin Chapell
Battalion Chief
Training Division

DEPARTMENT ORGANIZATIONAL CHART





The Rogers Fire Department operates from eight (8) fire stations across the community.

The reserve fleet includes an additional three (3) Engines, three (3) Ambulances, and two (2) Ladders.



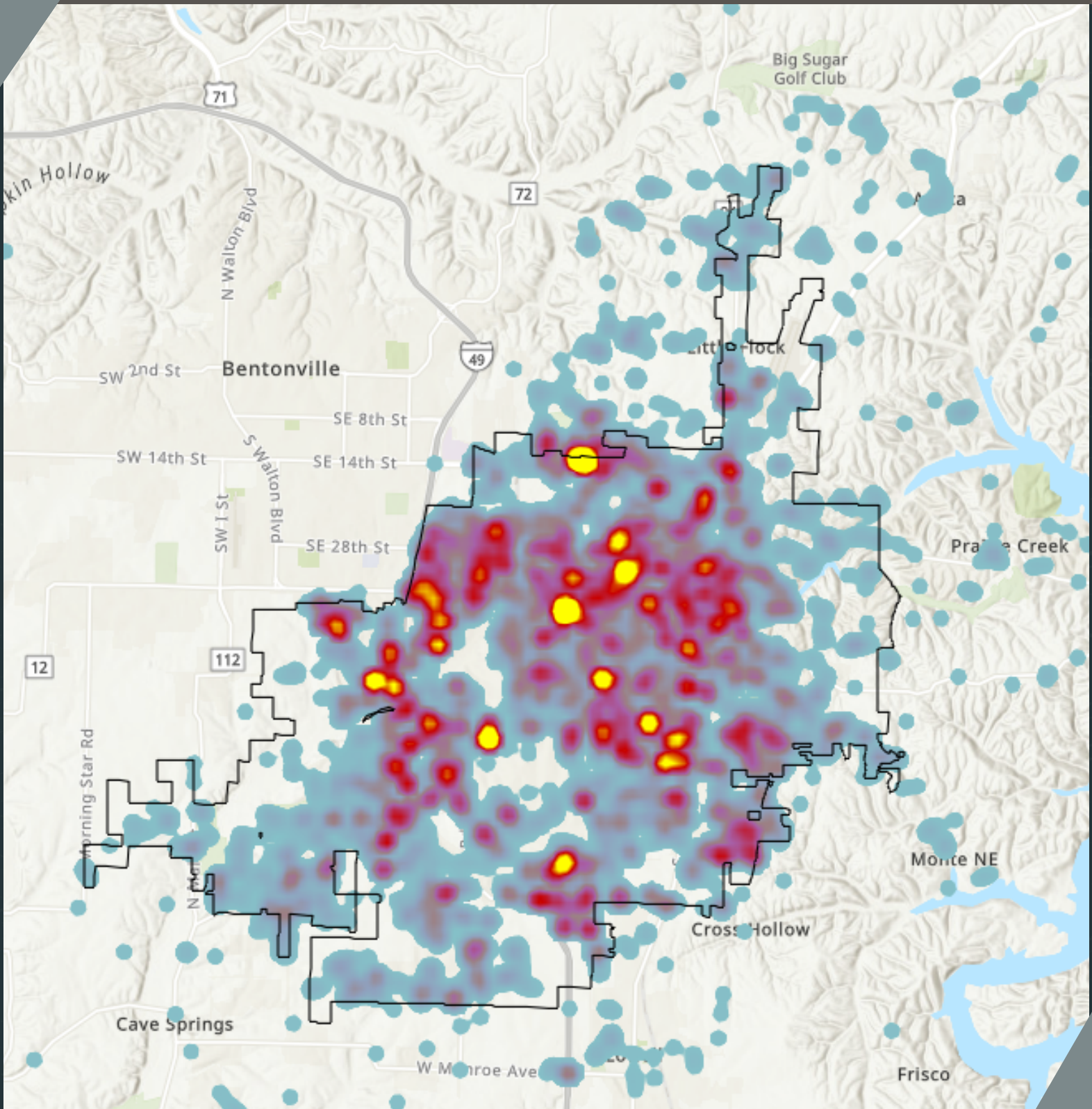
FRONT-LINE FLEET

- 6** Engines
- 5** Ambulances
- 2** Ladders
- 3** Brush Trucks
- 1** Rescue
- 1** HazMat
- 2** Collapse Rescues
- 3** ATVs
- 3** Rescue Boats
- 1** ARFF
- 1** Air & Light Unit

MONTHLY CALL VOLUME

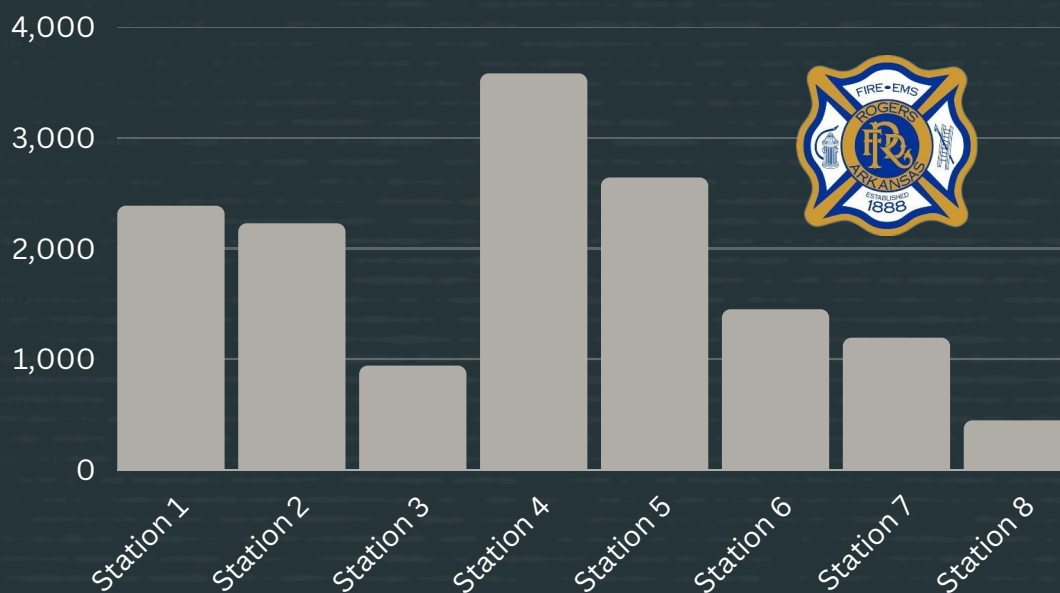


EMERGENCY RESPONSE ACTIVITY

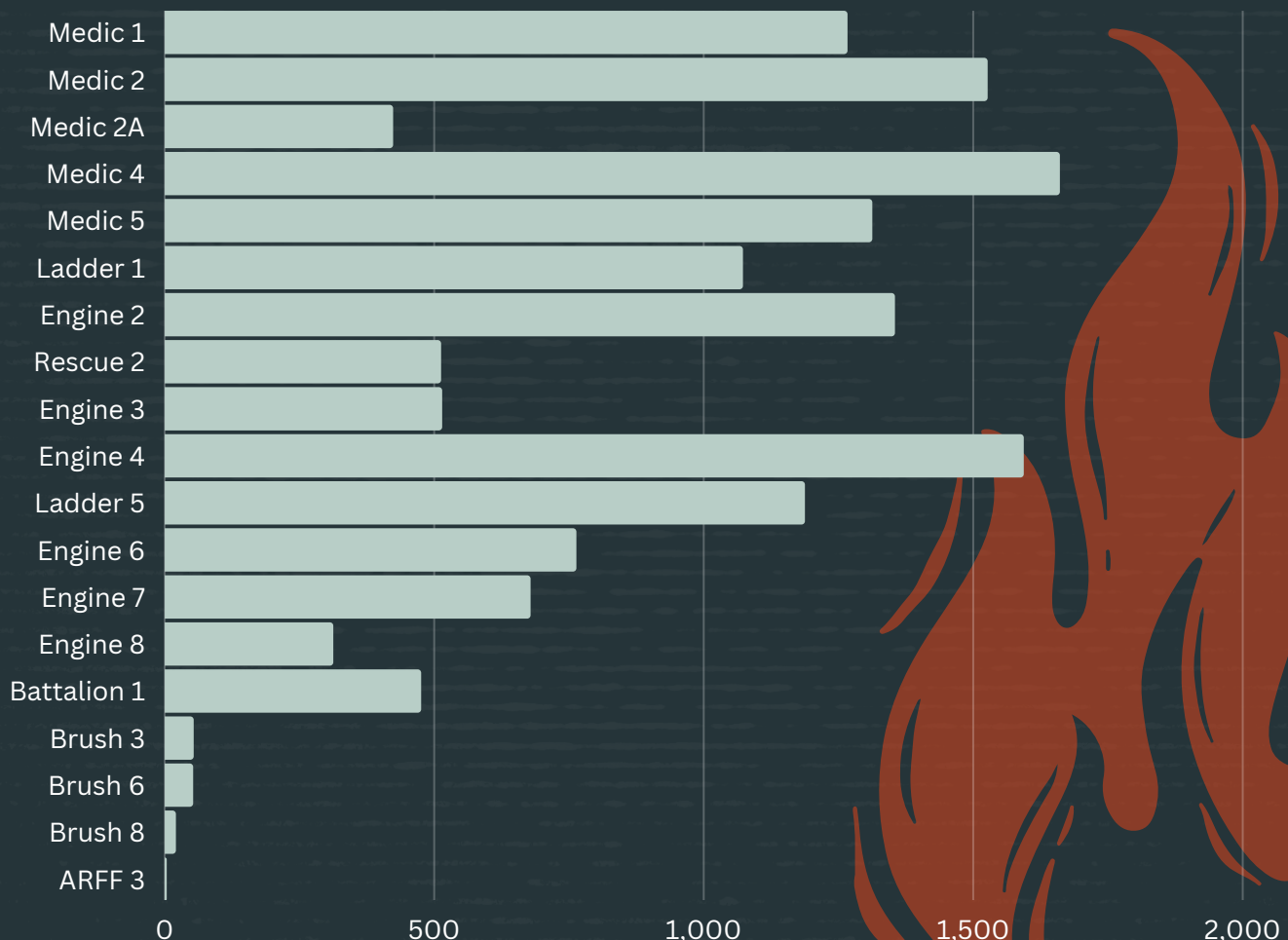


This heat map shows the locations of the 8,233 incidents that RFD responded to in 2022.

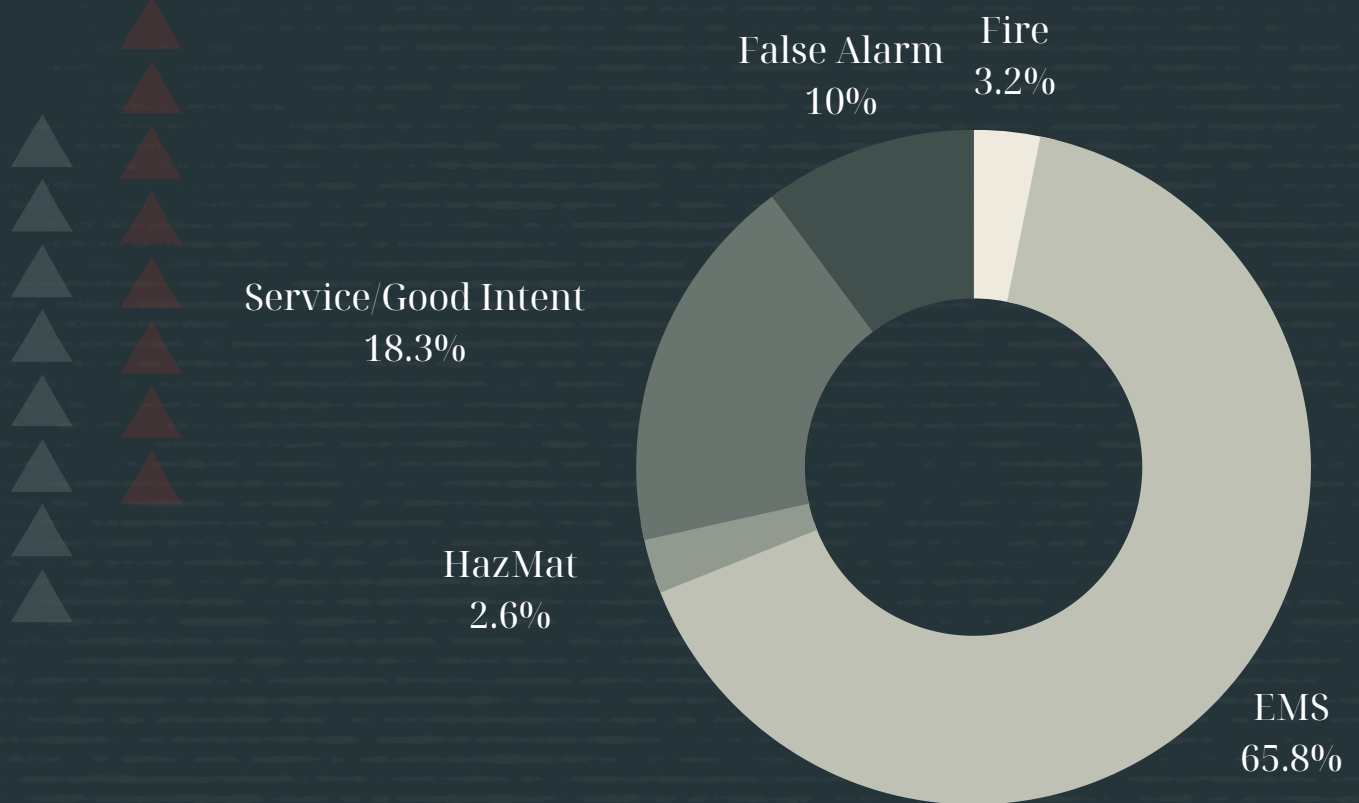
2022 Station Responses



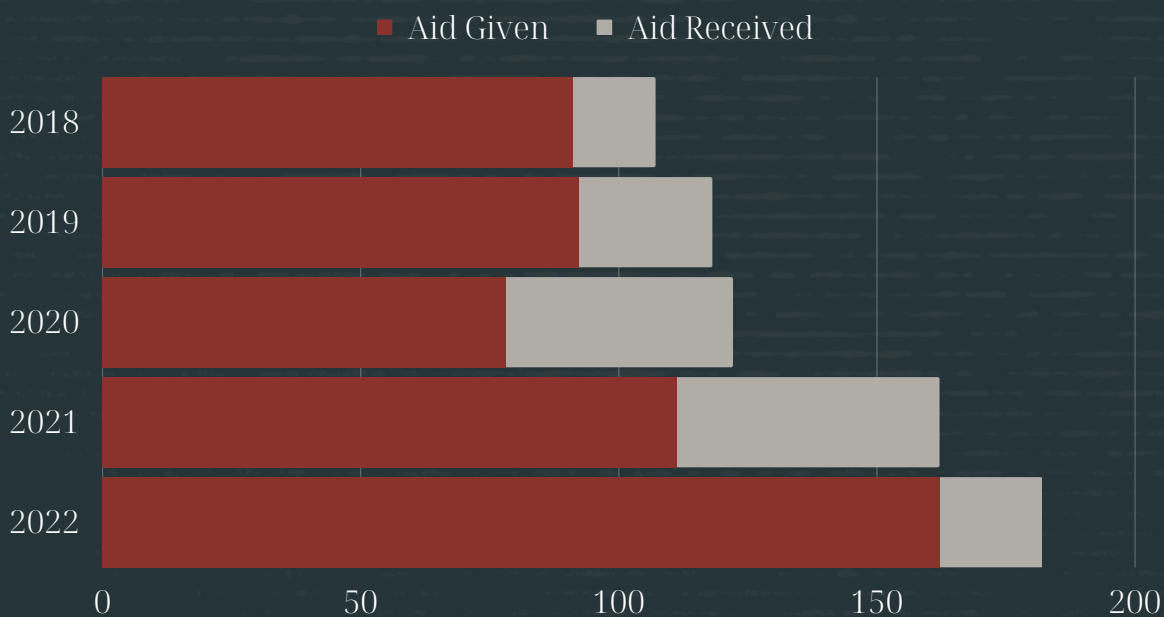
2022 Responses by Apparatus/Company



2022 Incident Types



Mutual Aid Responses (2018-2022)



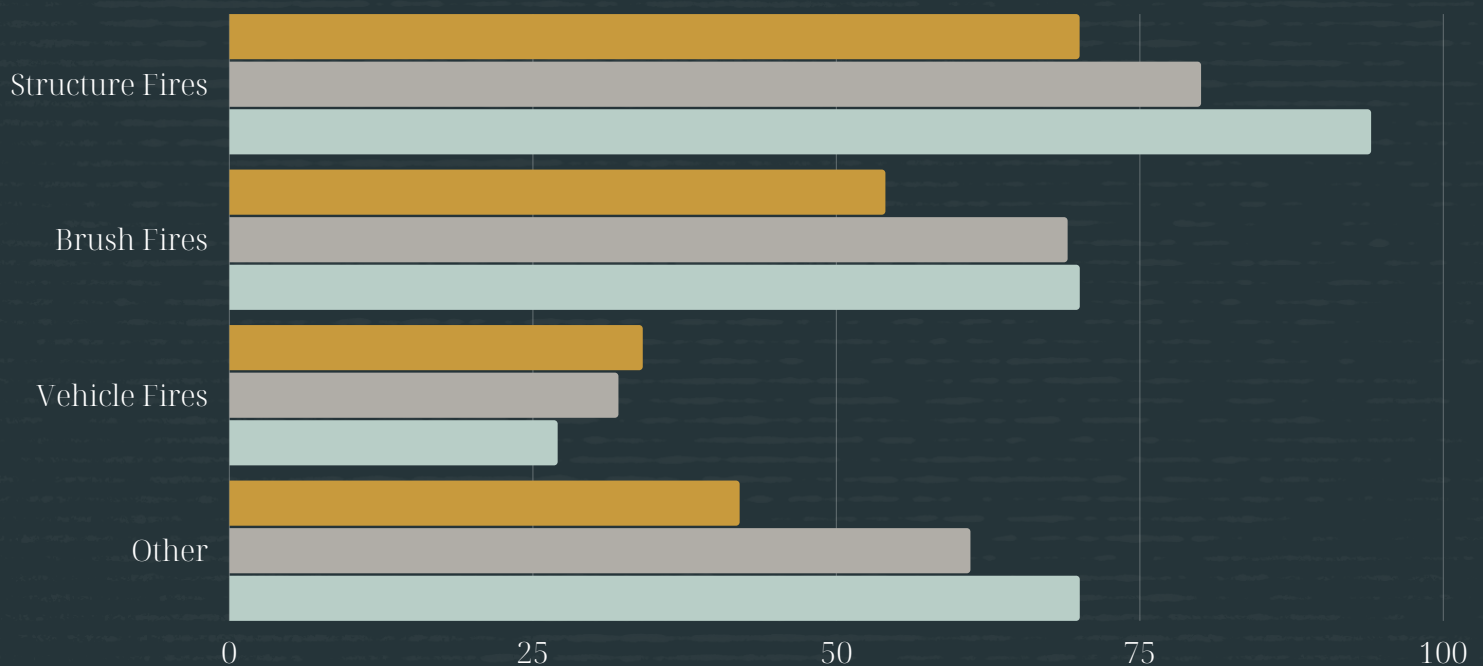
FIRE INCIDENTS



14% of Structure Fires were upgraded to a 2nd alarm fire due to their size and complexity.



■ 2020 ■ 2021 ■ 2022



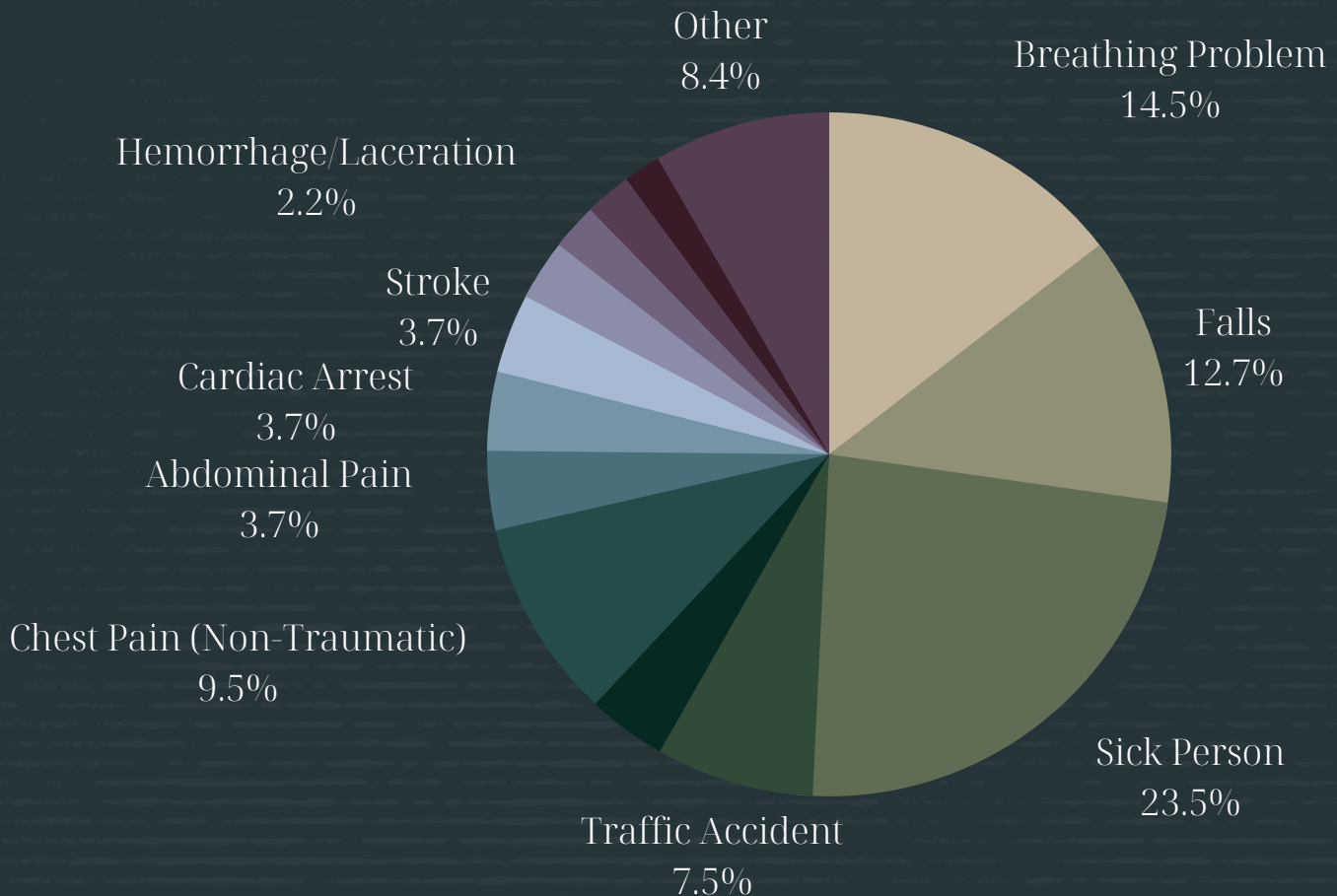
In 2022, the RFD responded to a total of 261 fires. This was an 8% increase in fire related incidents from the previous year.

FIRE RESPONSE



(High Risk) Fire Suppression - 90th Percentile Times Baseline Performance			2022
Alarm Handling	Pick-up to Dispatch	Urban	2:11
Turnout Time	Turnout Time 1st Unit	Urban	0:50
Travel Time	Travel Time 1st Unit Distribution	Urban	5:36
	Travel Time ERF Concentration	Urban	14:12
Total Response Time	Total Response Time 1st Unit on Scene Distribution	Urban	7:30
			N=137
	Total Response Time ERF Concentration	Urban	15:24
			N=71

EMS CHIEF COMPLAINT



Total EMS Incidents - 5,400



49% of all EMS Incidents were categorized as High Risk incidents.

EMS RESPONSE

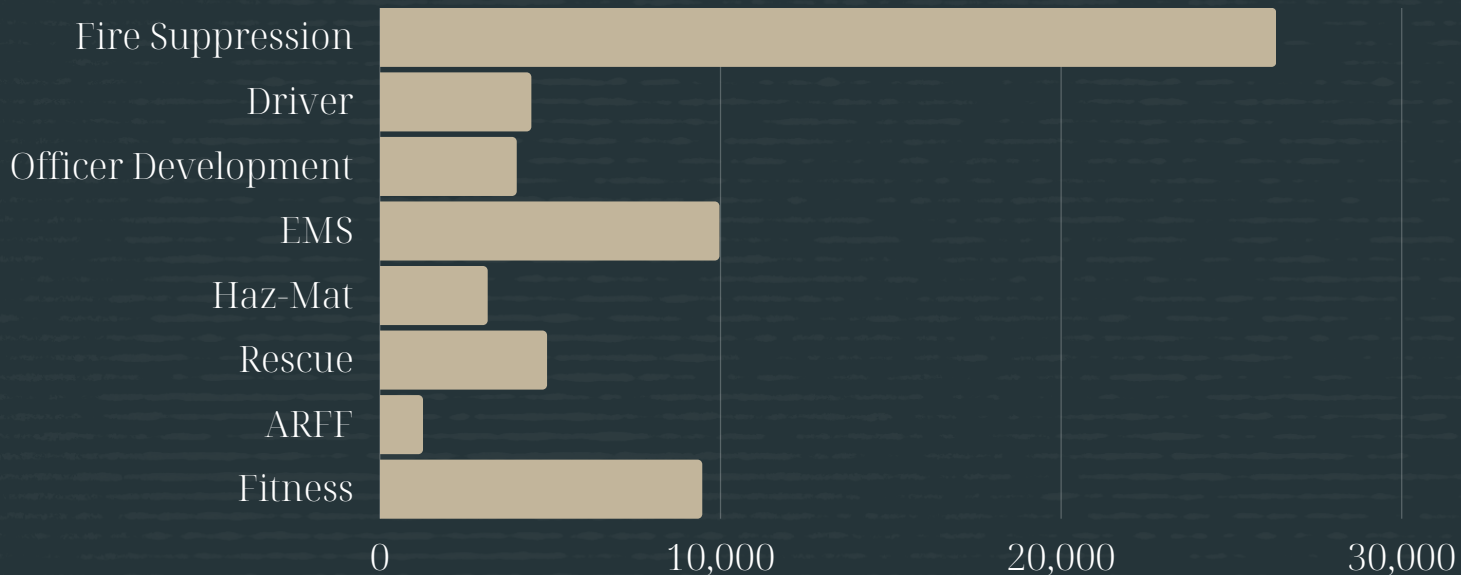


(High Risk) EMS 90th Percentile Times - Baseline Performance			2022
Alarm Handling	Pick-up to Dispatch	Urban	2:36
Turnout Time	Turnout Time 1st Unit	Urban	1:09
Travel Time	Travel Time 1st Unit Distribution	Urban	5:00
	Travel Time ERF Concentration	Urban	6:42
Total Response Time	Total Response Time 1st Unit on Scene Distribution	Urban	7:36
			N=2,172
	Total Response Time ERF Concentration	Urban	9:24
			N=2,668

TRAINING



TRAINING HOURS



RISK REDUCTION

The Community Risk Reduction Division (CRRD) of the Rogers Fire Department is responsible for a wide range of activities that make the community a safer place in which to work, shop, and live.

These activities include residential and commercial plan reviews, fire and life safety inspections, fire safety education, and fire investigations. The CRRD is charged with conducting fire and life safety inspections to protect our community and the lives of our citizens through enforcement of the laws and regulations governing fire safety.



Total Dollar Loss - \$3,696,960
Total Dollar Saved - \$45,496,190



Certificate of Occupancy - 370



Smoke Alarms
Installed
199



Fire Inspections
1,133

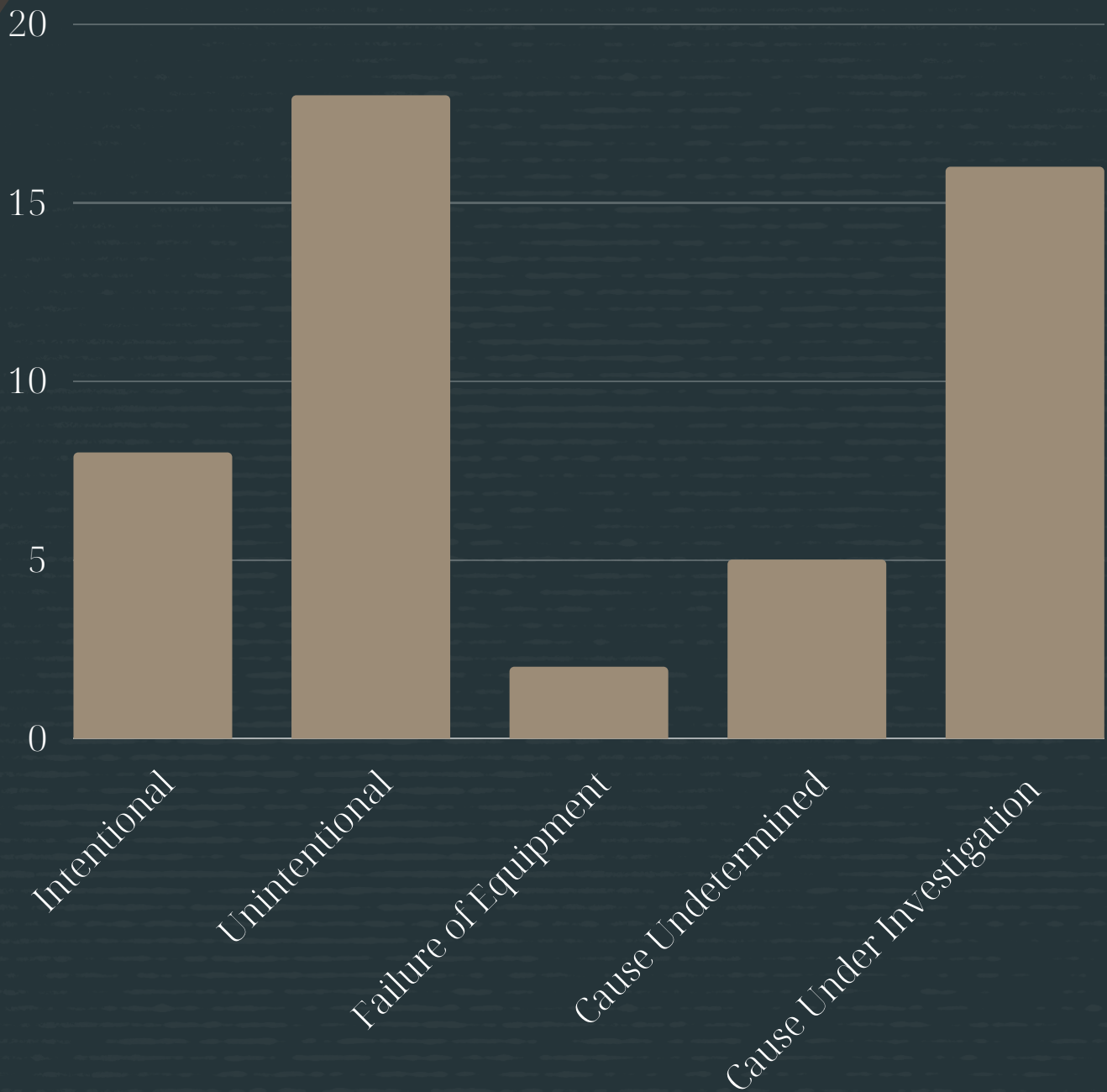


Plan Reviews
837



New Business
Licenses
458

RISK REDUCTION



Fires Investigated - 49

STATION LOCATIONS

Rogers Fire Department

Page 20



Station 1
301 North 1st Street



Station 5
2525 South Pinnacle Hills Parkway



Station 2
1800 West New Hope Road



Station 6
5701 South Bellview Road



Station 3
1 West Etris Drive



Station 7
3400 South 1st Street



Station 4
2424 West Olive Street



Station 8
7001 West Pleasant Grove Road



Fire Headquarters
201 North 1st Street

Emergency Training Center
3003 West Oak Street

Community Risk Reduction Division
113 North 4th Street